

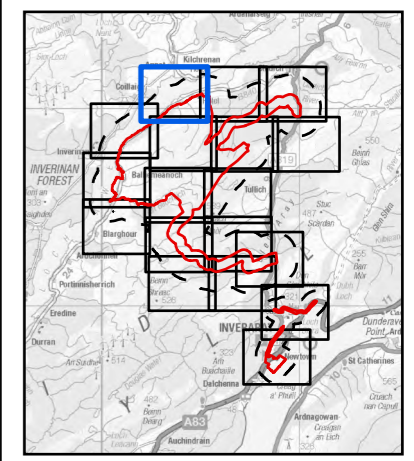
# AECOM

**PROJECT**  
**BALLIEMEANOCH**  
**PUMPED STORAGE**  
**HYDRO**

**CLIENT**  
 ILI (Borders PSH) Ltd.

**CONSULTANT**  
 AECOM Limited  
 177 Bothwell Street  
 Glasgow G2 7ER  
 www.aecom.com

- LEGEND**
- Development Boundary
  - Study Area
  - Non-designated Assets
  - Canmore - Area
  - WoSAS - Linears



**NOTES**

Reproduced from Ordnance Survey digital map data © Crown copyright 2024. All rights reserved. Licence number 0100031673. Contains public sector information licensed under the Open Government Licence v3.0.

**ISSUE PURPOSE**  
 FINAL

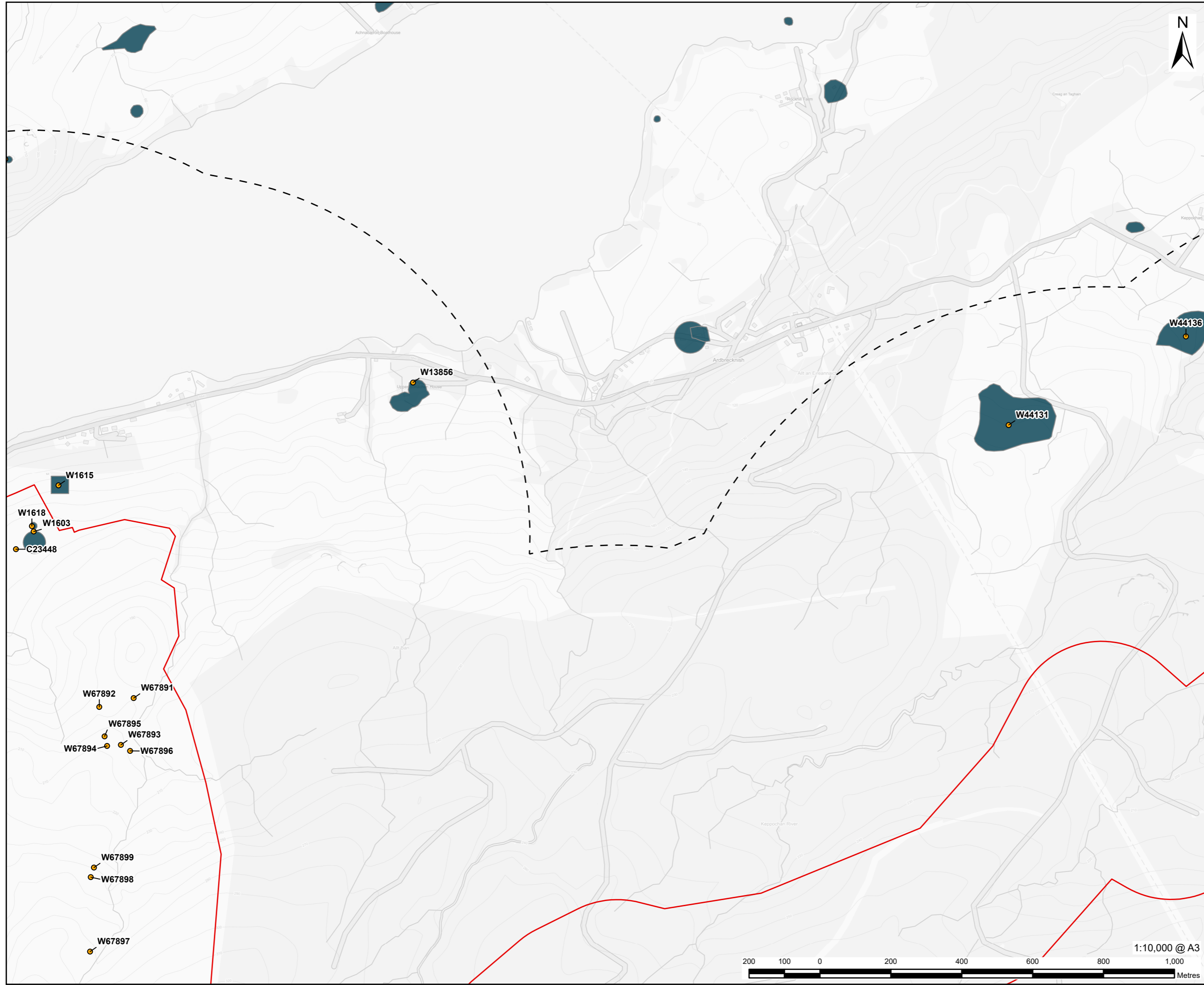
**PROJECT NUMBER**  
 60570241

**FIGURE TITLE**  
 Non-designated Heritage Assets within Study Area

**FIGURE NUMBER**  
 Figure 13.2 (Sheet 1 of 18)



This drawing has been prepared for the use of AECOM's client. It may not be used, modified, reproduced or relied upon by third parties, except as agreed by AECOM or as required by law. AECOM accepts no responsibility, and denies any liability whatsoever, to any party that uses or relies on this drawing without AECOM's express written consent. Do not scale this document. All measurements must be obtained from the stated dimensions.



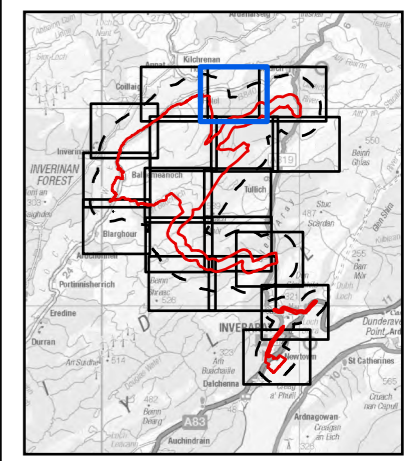
# AECOM

**PROJECT**  
**BALLIEMEANOCH**  
**PUMPED STORAGE**  
**HYDRO**

**CLIENT**  
 ILI (Borders PSH) Ltd.

**CONSULTANT**  
 AECOM Limited  
 177 Bothwell Street  
 Glasgow G2 7ER  
 www.aecom.com

- LEGEND**
- Development Boundary
  - Study Area
  - Non-designated Assets
  - Canmore - Area
  - WoSAS - Linears



**NOTES**

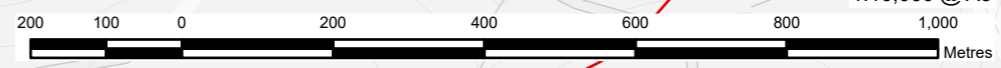
Reproduced from Ordnance Survey digital map data © Crown copyright 2024. All rights reserved. Licence number 0100031673. Contains public sector information licensed under the Open Government Licence v3.0.

**ISSUE PURPOSE**  
 FINAL

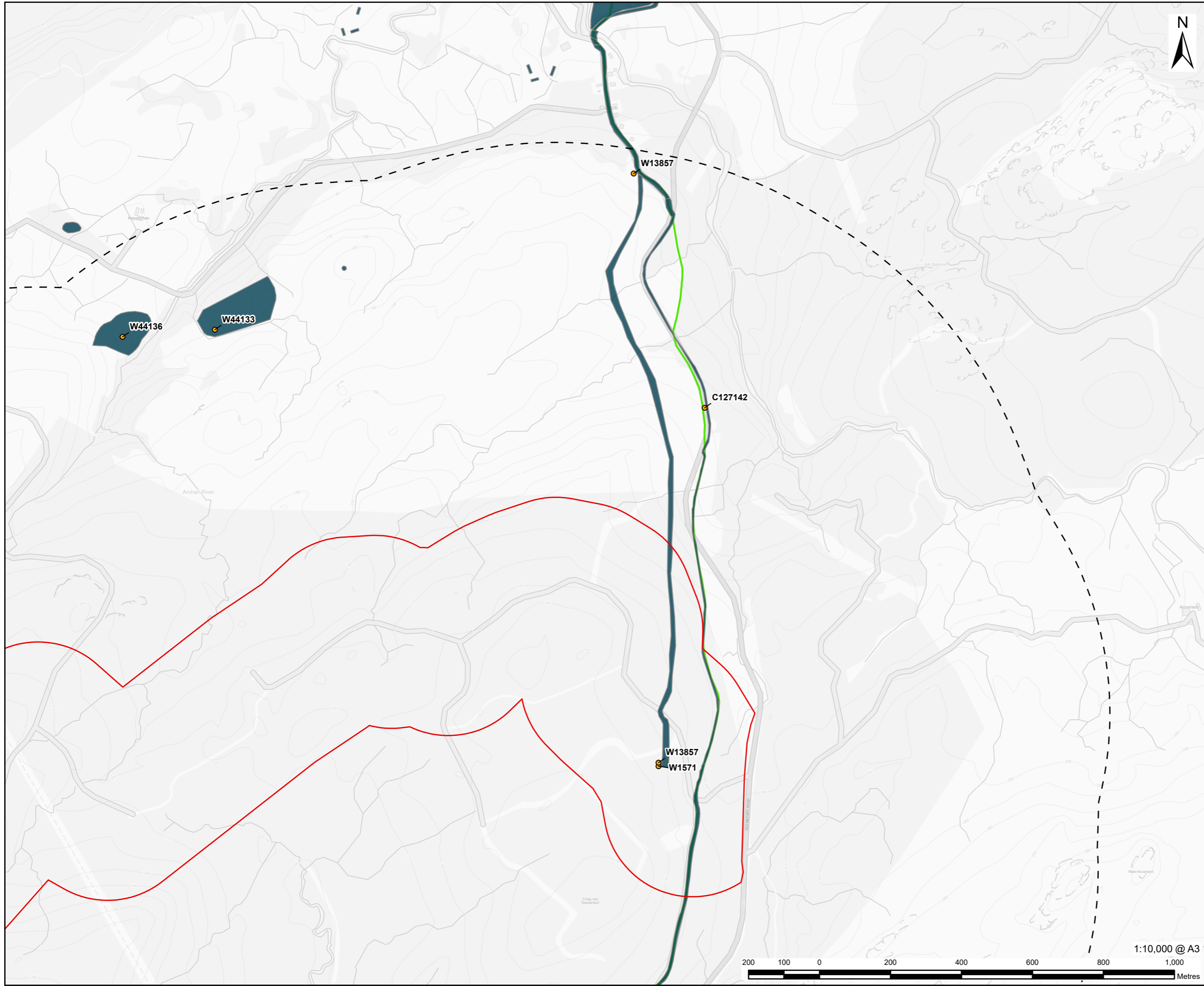
**PROJECT NUMBER**  
 60570241

**FIGURE TITLE**  
 Non-designated Heritage Assets within Study Area

**FIGURE NUMBER**  
 Figure 13.2 (Sheet 2 of 18)



This drawing has been prepared for the use of AECOM's client. It may not be used, modified, reproduced or relied upon by third parties, except as agreed by AECOM or as required by law. AECOM accepts no responsibility, and denies any liability whatsoever, to any party that uses or relies on this drawing without AECOM's express written consent. Do not scale this document. All measurements must be obtained from the stated dimensions.

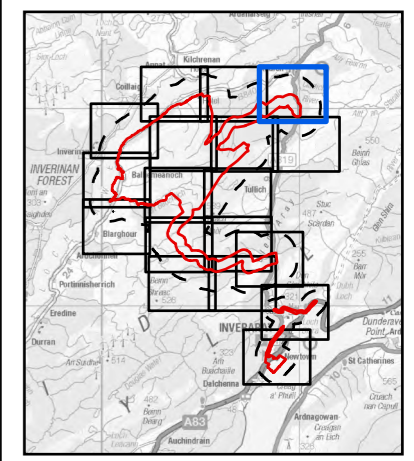


**PROJECT**  
**BALLIEMEANOCH  
 PUMPED STORAGE  
 HYDRO**

**CLIENT**  
 ILI (Borders PSH) Ltd.

**CONSULTANT**  
 AECOM Limited  
 177 Bothwell Street  
 Glasgow G2 7ER  
 www.aecom.com

- LEGEND**
- Development Boundary
  - Study Area
  - Non-designated Assets
  - Canmore - Area
  - WoSAS - Linears



**NOTES**

Reproduced from Ordnance Survey digital map data © Crown copyright 2024. All rights reserved. Licence number 0100031673. Contains public sector information licensed under the Open Government Licence v3.0.

**ISSUE PURPOSE**  
 FINAL

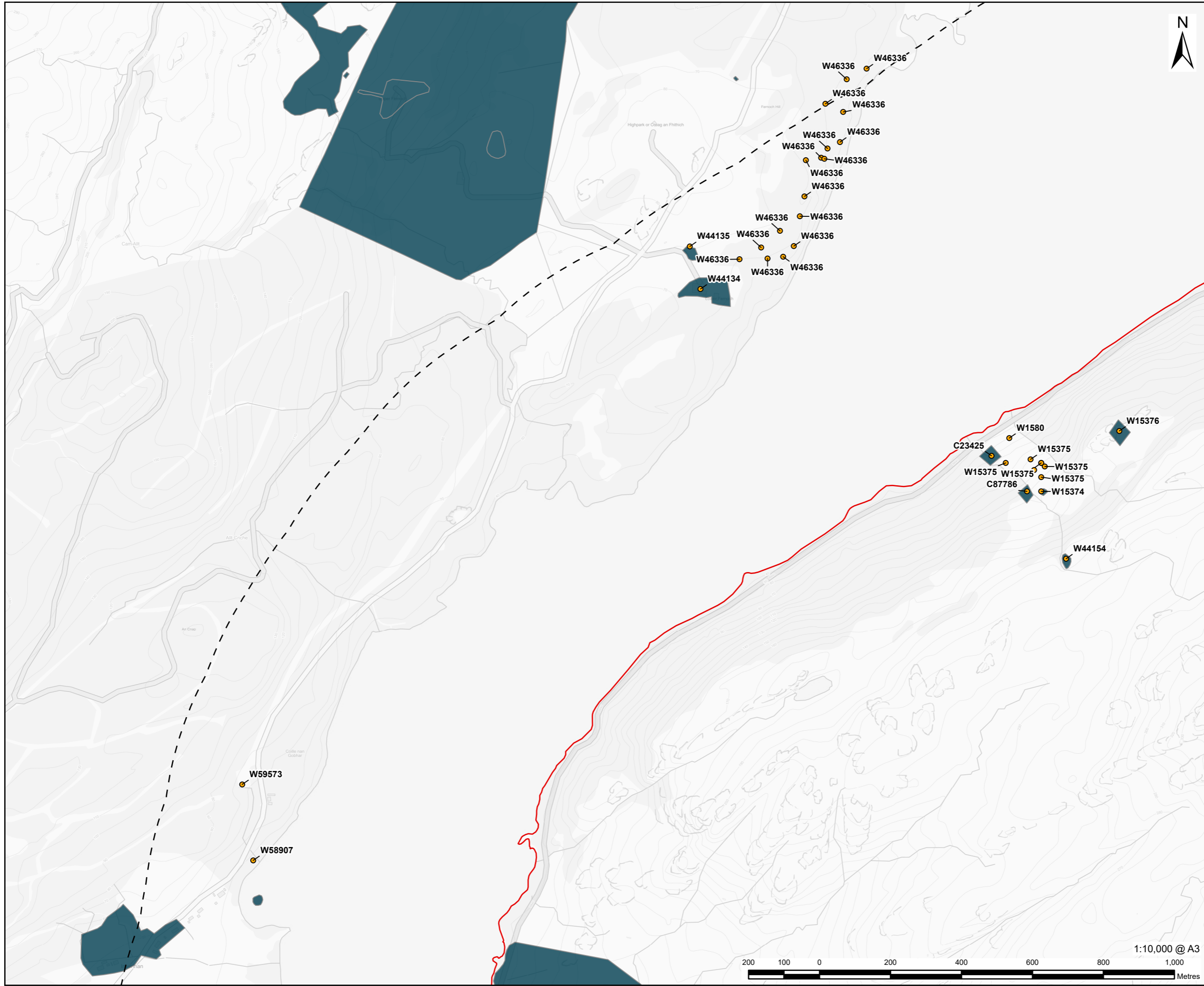
**PROJECT NUMBER**  
 60570241

**FIGURE TITLE**  
 Non-designated Heritage Assets within Study Area

**FIGURE NUMBER**  
 Figure 13.2 (Sheet 3 of 18)



This drawing has been prepared for the use of AECOM's client. It may not be used, modified, reproduced or relied upon by third parties, except as agreed by AECOM or as required by law. AECOM accepts no responsibility, and denies any liability whatsoever, to any party that uses or relies on this drawing without AECOM's express written consent. Do not scale this document. All measurements must be obtained from the stated dimensions.



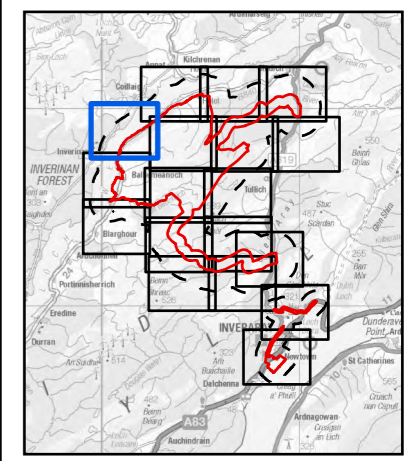
# AECOM

**PROJECT**  
**BALLIEMEANOCH**  
**PUMPED STORAGE**  
**HYDRO**

**CLIENT**  
 ILI (Borders PSH) Ltd.

**CONSULTANT**  
 AECOM Limited  
 177 Bothwell Street  
 Glasgow G2 7ER  
 www.aecom.com

- LEGEND**
- Development Boundary
  - Study Area
  - Non-designated Assets
  - Canmore - Area
  - WoSAS - Linears



**NOTES**

Reproduced from Ordnance Survey digital map data © Crown copyright 2024. All rights reserved. Licence number 0100031673. Contains public sector information licensed under the Open Government Licence v3.0.

**ISSUE PURPOSE**  
 FINAL

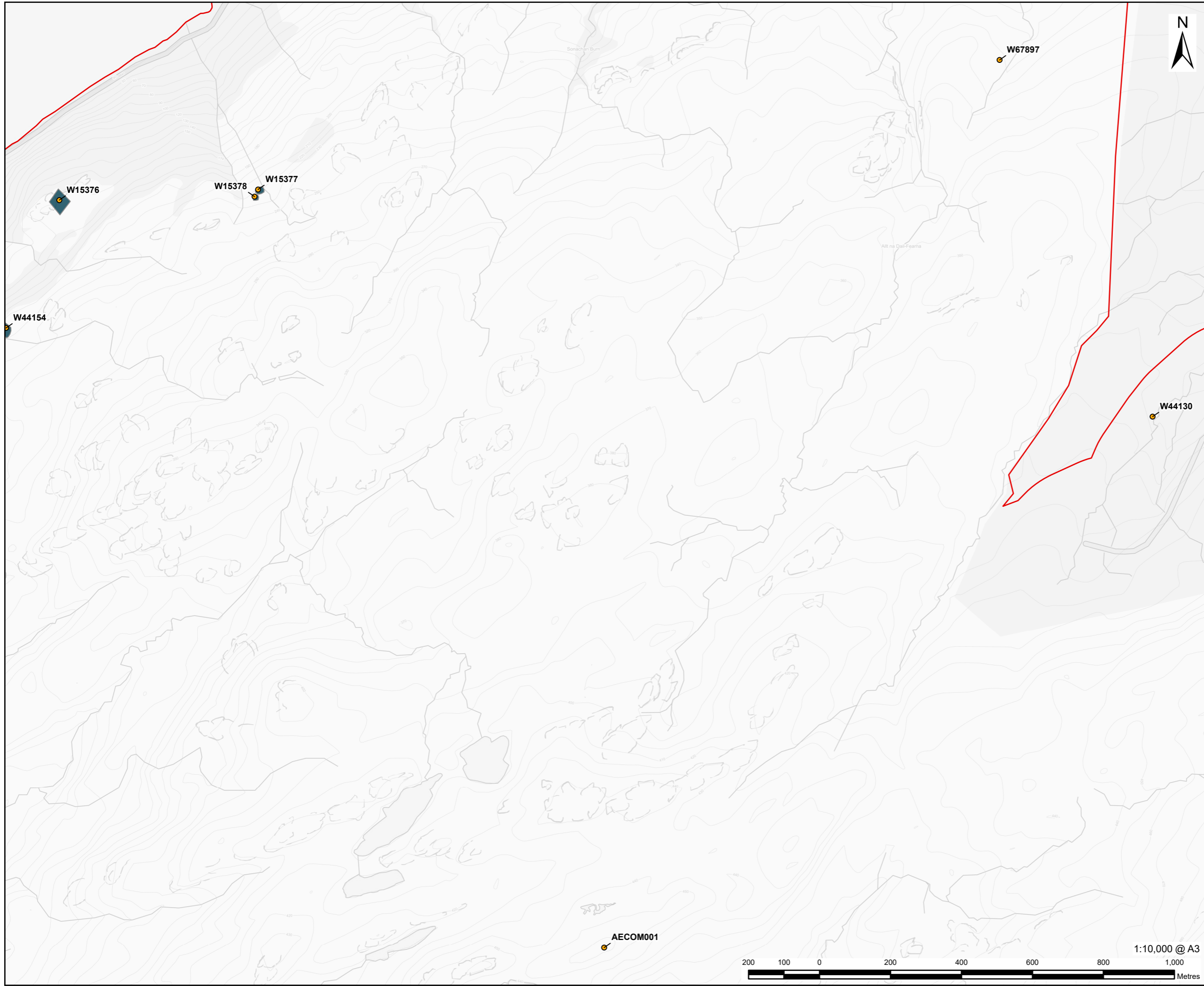
**PROJECT NUMBER**  
 60570241

**FIGURE TITLE**  
 Non-designated Heritage Assets within Study Area

**FIGURE NUMBER**  
 Figure 13.2 (Sheet 4 of 18)



This drawing has been prepared for the use of AECOM's client. It may not be used, modified, reproduced or relied upon by third parties, except as agreed by AECOM or as required by law. AECOM accepts no responsibility, and denies any liability whatsoever, to any party that uses or relies on this drawing without AECOM's express written consent. Do not scale this document. All measurements must be obtained from the stated dimensions.



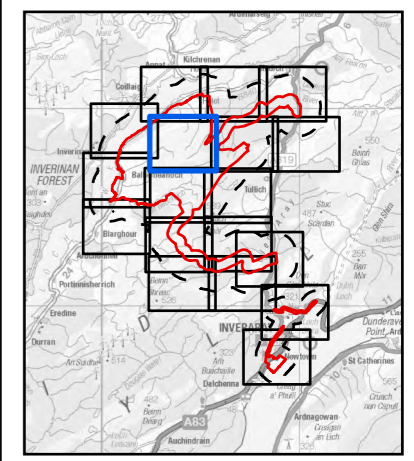
# AECOM

**PROJECT**  
**BALLIEMEANOCH**  
**PUMPED STORAGE**  
**HYDRO**

**CLIENT**  
 ILI (Borders PSH) Ltd.

**CONSULTANT**  
 AECOM Limited  
 177 Bothwell Street  
 Glasgow G2 7ER  
 www.aecom.com

- LEGEND**
- Development Boundary
  - Study Area
  - Non-designated Assets
  - Canmore - Area
  - WoSAS - Linears



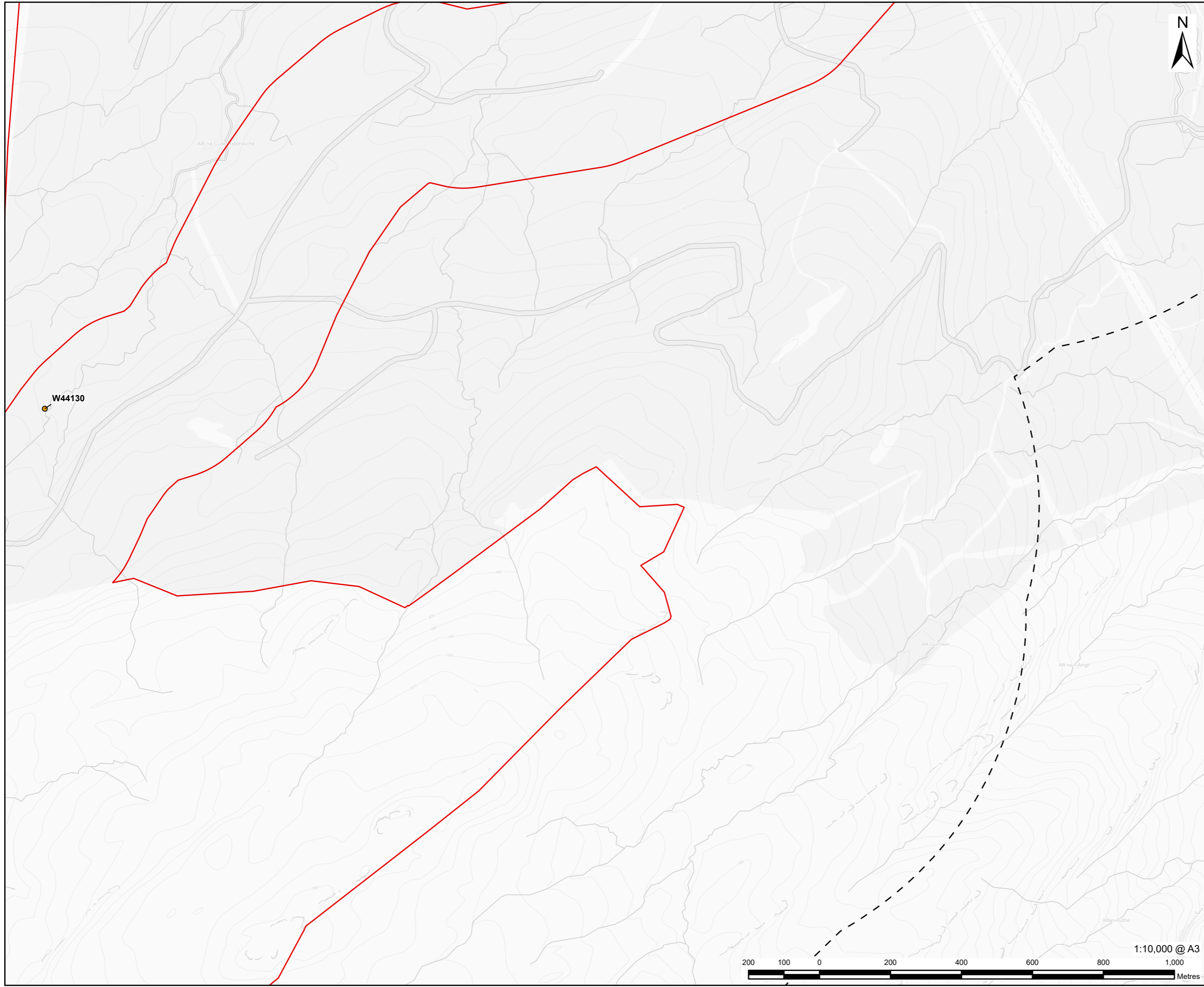
**NOTES**  
 Reproduced from Ordnance Survey digital map data © Crown copyright 2024. All rights reserved. Licence number 0100031673. Contains public sector information licensed under the Open Government Licence v3.0.

**ISSUE PURPOSE**  
 FINAL  
**PROJECT NUMBER**  
 60570241  
**FIGURE TITLE**  
 Non-designated Heritage Assets within Study Area

**FIGURE NUMBER**  
 Figure 13.2 (Sheet 5 of 18)



This drawing has been prepared for the use of AECOM's client. It may not be used, modified, reproduced or relied upon by third parties, except as agreed by AECOM or as required by law. AECOM accepts no responsibility, and denies any liability whatsoever, to any party that uses or relies on this drawing without AECOM's express written consent. Do not scale this document. All measurements must be obtained from the stated dimensions.



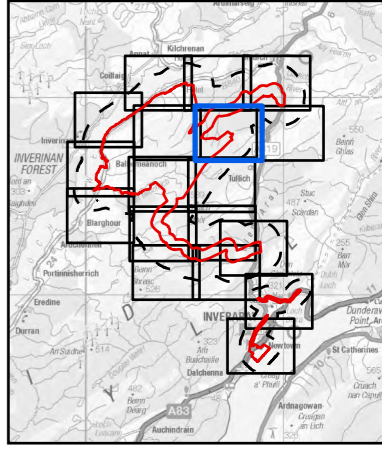
**AECOM**

**PROJECT**  
**BALLIEMEANOCH**  
**PUMPED STORAGE**  
**HYDRO**

**CLIENT**  
 ILI (Borders PSH) Ltd.

**CONSULTANT**  
 AECOM Limited  
 177 Bothwell Street  
 Glasgow G2 7ER  
 www.aecom.com

- LEGEND**
- Development Boundary
  - Study Area
  - Non-designated Assets
  - Canmore - Area
  - WoSAS - Linears



**NOTES**  
 Reproduced from Ordnance Survey digital map data © Crown copyright 2024. All rights reserved. Licence number 0100031673. Contains public sector information licensed under the Open Government Licence v3.0.

**ISSUE PURPOSE**  
 FINAL

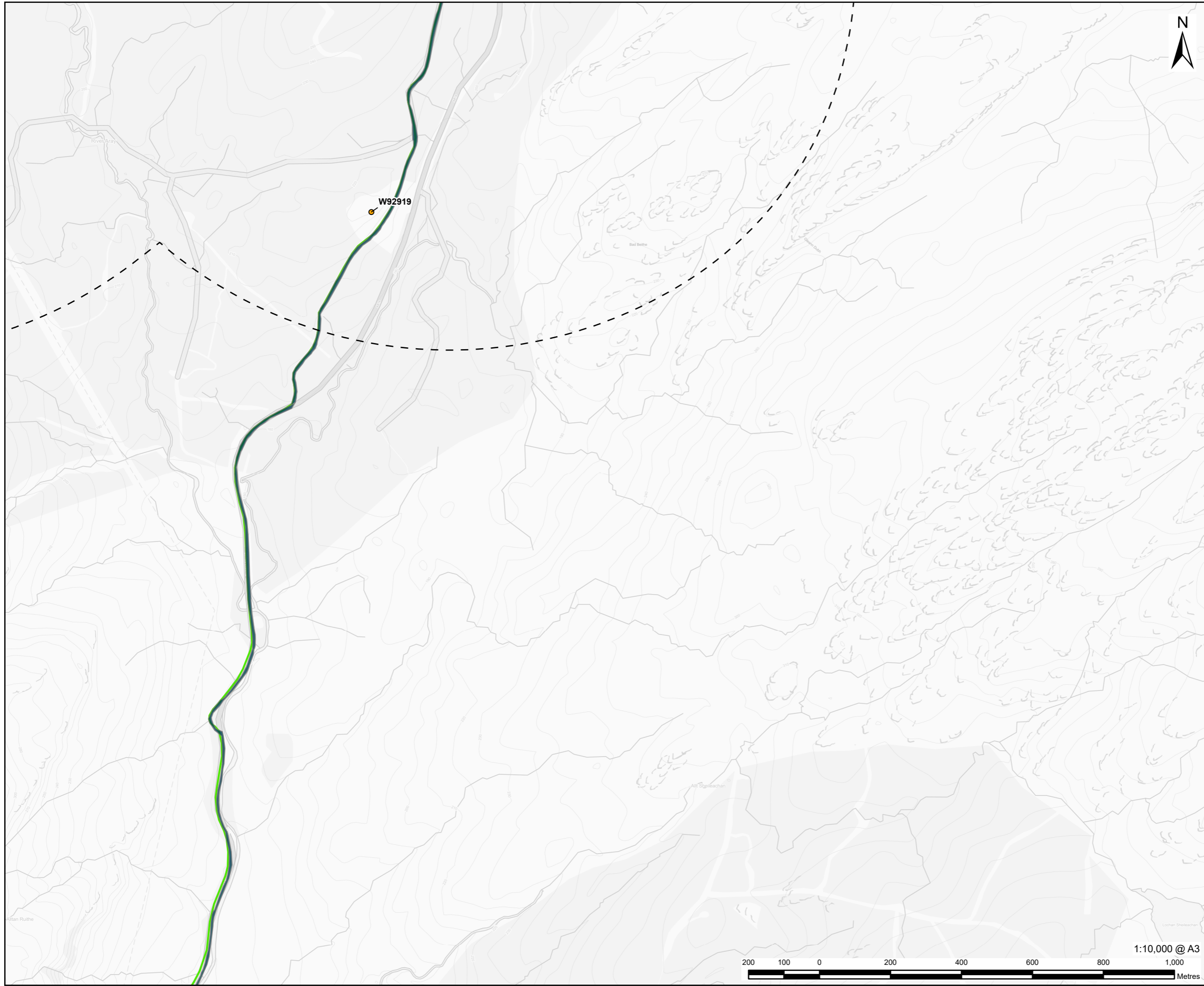
**PROJECT NUMBER**  
 60570241

**FIGURE TITLE**  
 Non-designated Heritage Assets within Study Area

**FIGURE NUMBER**  
 Figure 13.2 (Sheet 6 of 18)



This drawing has been prepared for the use of AECOM's client. It may not be used, modified, reproduced or relied upon by third parties, except as agreed by AECOM or as required by law. AECOM accepts no responsibility, and denies any liability whatsoever, to any party that uses or relies on this drawing without AECOM's express written consent. Do not scale this document. All measurements must be obtained from the stated dimensions.



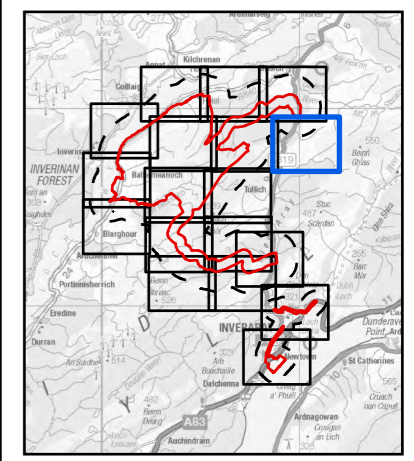
# AECOM

**PROJECT**  
**BALLIEMEANOCH**  
**PUMPED STORAGE**  
**HYDRO**

**CLIENT**  
 ILI (Borders PSH) Ltd.

**CONSULTANT**  
 AECOM Limited  
 177 Bothwell Street  
 Glasgow G2 7ER  
 www.aecom.com

- LEGEND**
- Development Boundary
  - Study Area
  - Non-designated Assets
  - Canmore - Area
  - WoSAS - Linears



**NOTES**

Reproduced from Ordnance Survey digital map data © Crown copyright 2024. All rights reserved. Licence number 0100031673. Contains public sector information licensed under the Open Government Licence v3.0.

**ISSUE PURPOSE**  
 FINAL

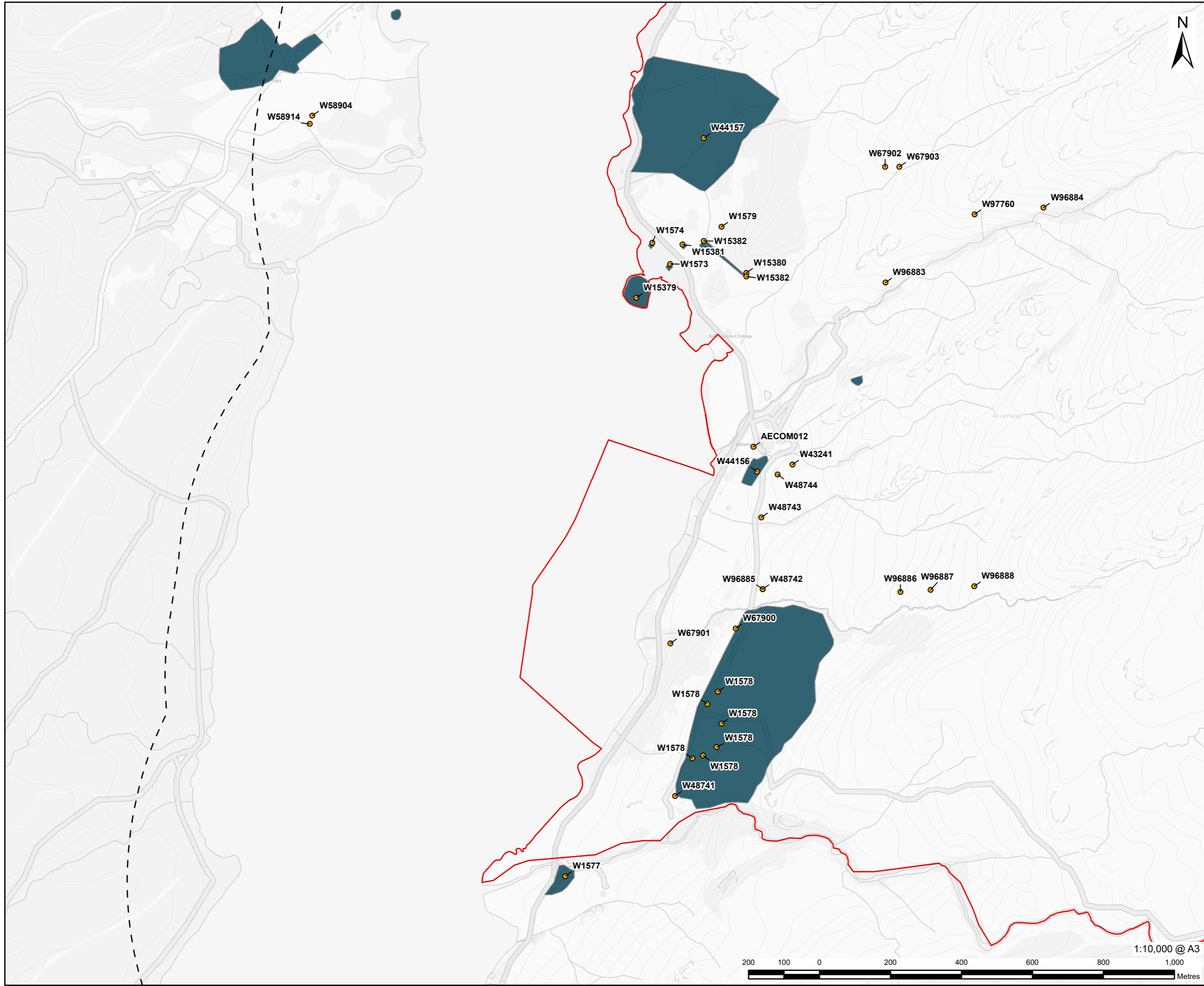
**PROJECT NUMBER**  
 60570241

**FIGURE TITLE**  
 Non-designated Heritage Assets within Study Area

**FIGURE NUMBER**  
 Figure 13.2 (Sheet 7 of 18)



This drawing has been prepared for the use of AECOM's client. It may not be used, modified, reproduced or relied upon by third parties, except as agreed by AECOM or as required by law. AECOM accepts no responsibility, and denies any liability whatsoever, to any party that uses or relies on this drawing without AECOM's express written consent. Do not scale this document. All measurements must be obtained from the stated dimensions.



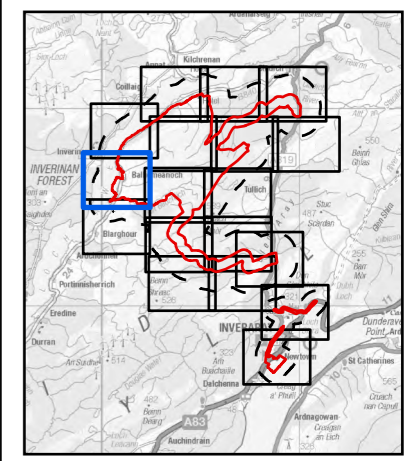
# AECOM

**PROJECT**  
BALLIEMEANOCH  
PUMPED STORAGE  
HYDRO

**CLIENT**  
ILI (Borders PSH) Ltd.

**CONSULTANT**  
AECOM Limited  
177 Bothwell Street  
Glasgow G2 7ER  
www.aecom.com

- LEGEND**
- Development Boundary
  - Study Area
  - Non-designated Assets
  - Canmore - Area
  - WoSAS - Linears



**NOTES**

Reproduced from Ordnance Survey digital map data © Crown copyright 2024. All rights reserved. Licence number 0100031673. Contains public sector information licensed under the Open Government Licence v3.0.

**ISSUE PURPOSE**  
FINAL

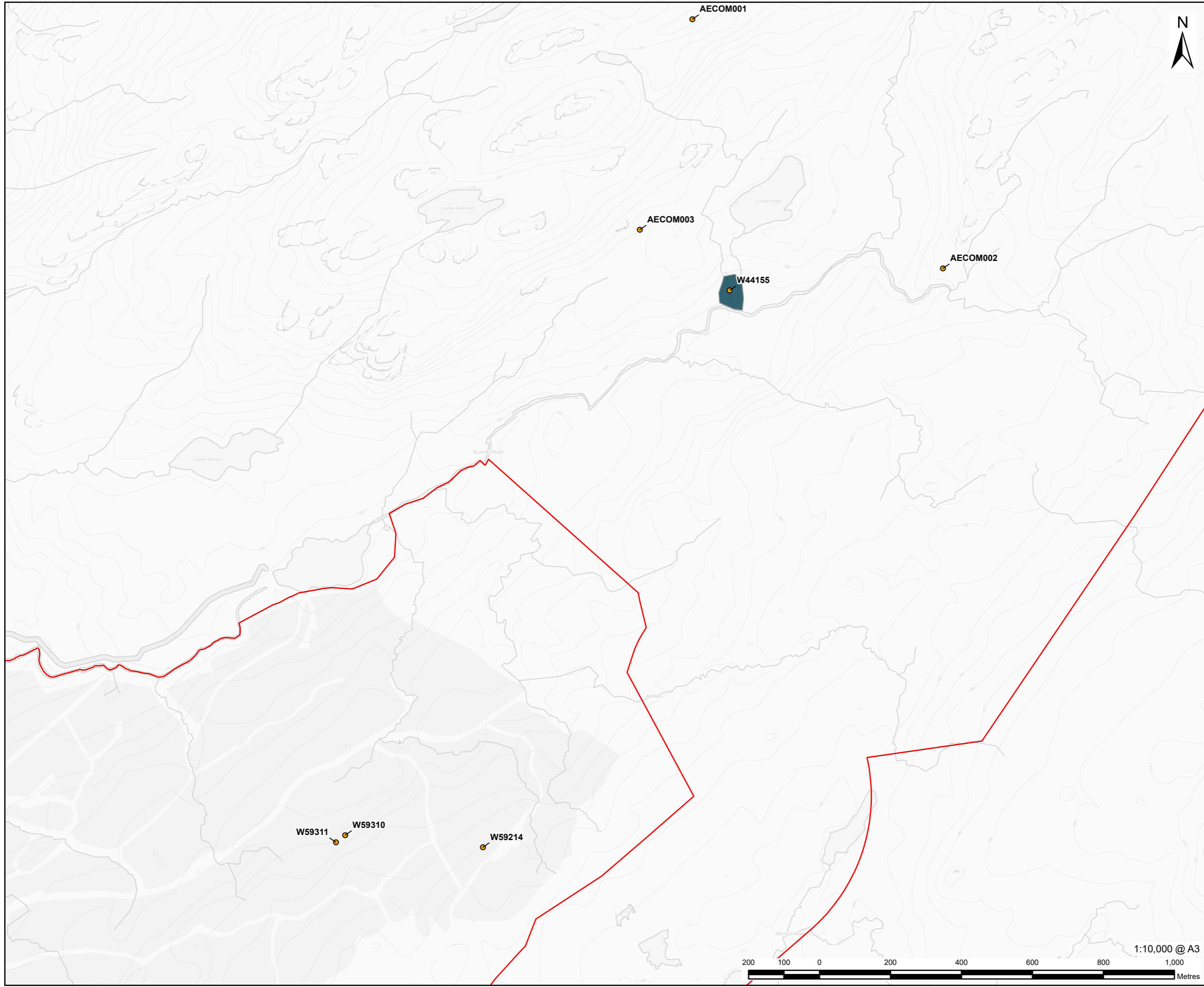
**PROJECT NUMBER**  
60570241

**FIGURE TITLE**  
Non-designated Heritage Assets within Study Area

**FIGURE NUMBER**  
Figure 13.2 (Sheet 8 of 18)

This drawing has been prepared for the use of AECOM's client. It may not be used, modified, reproduced or relied upon by third parties, except as agreed by AECOM or as required by law. AECOM accepts no responsibility, and denies any liability whatsoever, to any party that uses or relies on this drawing without AECOM's express written consent. Do not scale this document. All measurements must be obtained from the stated dimensions.





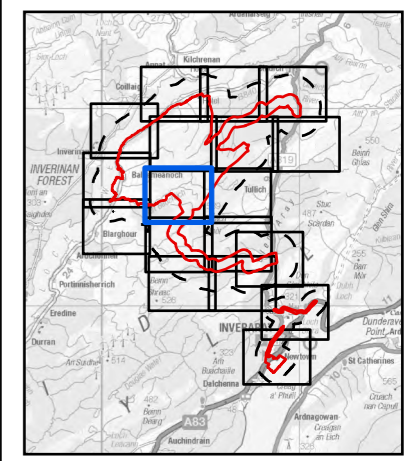
# AECOM

**PROJECT**  
**BALLIEMEANOCH**  
**PUMPED STORAGE**  
**HYDRO**

**CLIENT**  
 ILI (Borders PSH) Ltd.

**CONSULTANT**  
 AECOM Limited  
 177 Bothwell Street  
 Glasgow G2 7ER  
 www.aecom.com

- LEGEND**
- Development Boundary
  - Study Area
  - Non-designated Assets
  - Canmore - Area
  - WoSAS - Linears

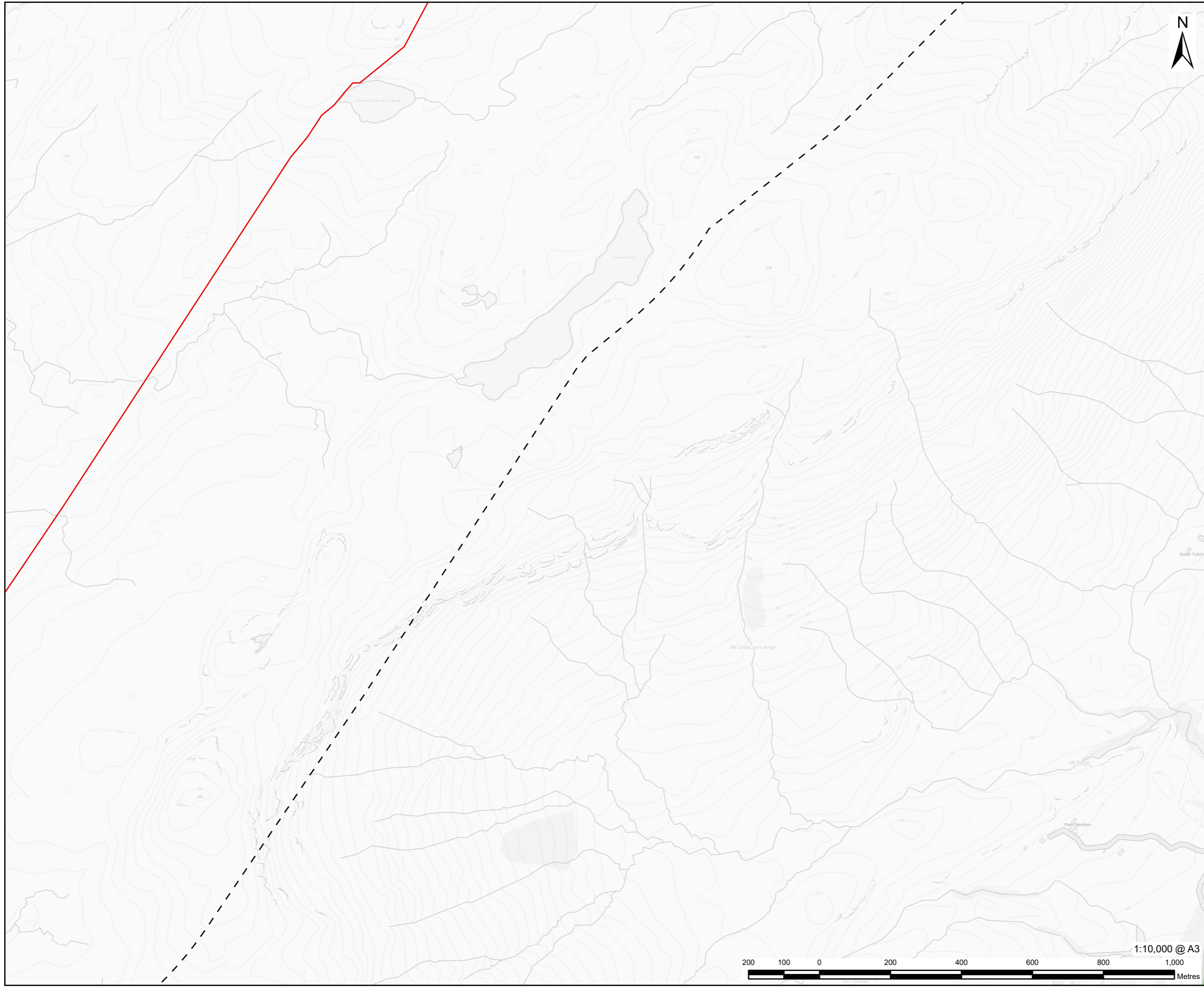


**NOTES**  
 Reproduced from Ordnance Survey digital map data © Crown copyright 2024. All rights reserved. Licence number 0100031673. Contains public sector information licensed under the Open Government Licence v3.0.

**ISSUE PURPOSE**  
 FINAL  
**PROJECT NUMBER**  
 60570241  
**FIGURE TITLE**  
 Non-designated Heritage Assets within Study Area

**FIGURE NUMBER**  
 Figure 13.2 (Sheet 9 of 18)

This drawing has been prepared for the use of AECOM's client. It may not be used, modified, reproduced or relied upon by third parties, except as agreed by AECOM or as required by law. AECOM accepts no responsibility, and denies any liability whatsoever, to any party that uses or relies on this drawing without AECOM's express written consent. Do not scale this document. All measurements must be obtained from the stated dimensions.

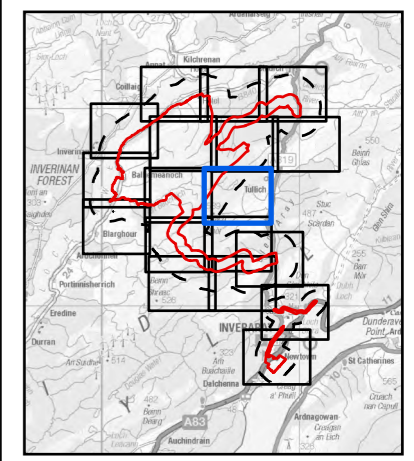


**PROJECT**  
**BALLIEMEANOCH**  
**PUMPED STORAGE**  
**HYDRO**

**CLIENT**  
 ILI (Borders PSH) Ltd.

**CONSULTANT**  
 AECOM Limited  
 177 Bothwell Street  
 Glasgow G2 7ER  
 www.aecom.com

- LEGEND**
- Development Boundary
  - Study Area
  - Non-designated Assets
  - Canmore - Area
  - WoSAS - Linears



**NOTES**

Reproduced from Ordnance Survey digital map data © Crown copyright 2024. All rights reserved. Licence number 0100031673. Contains public sector information licensed under the Open Government Licence v3.0.

**ISSUE PURPOSE**  
 FINAL

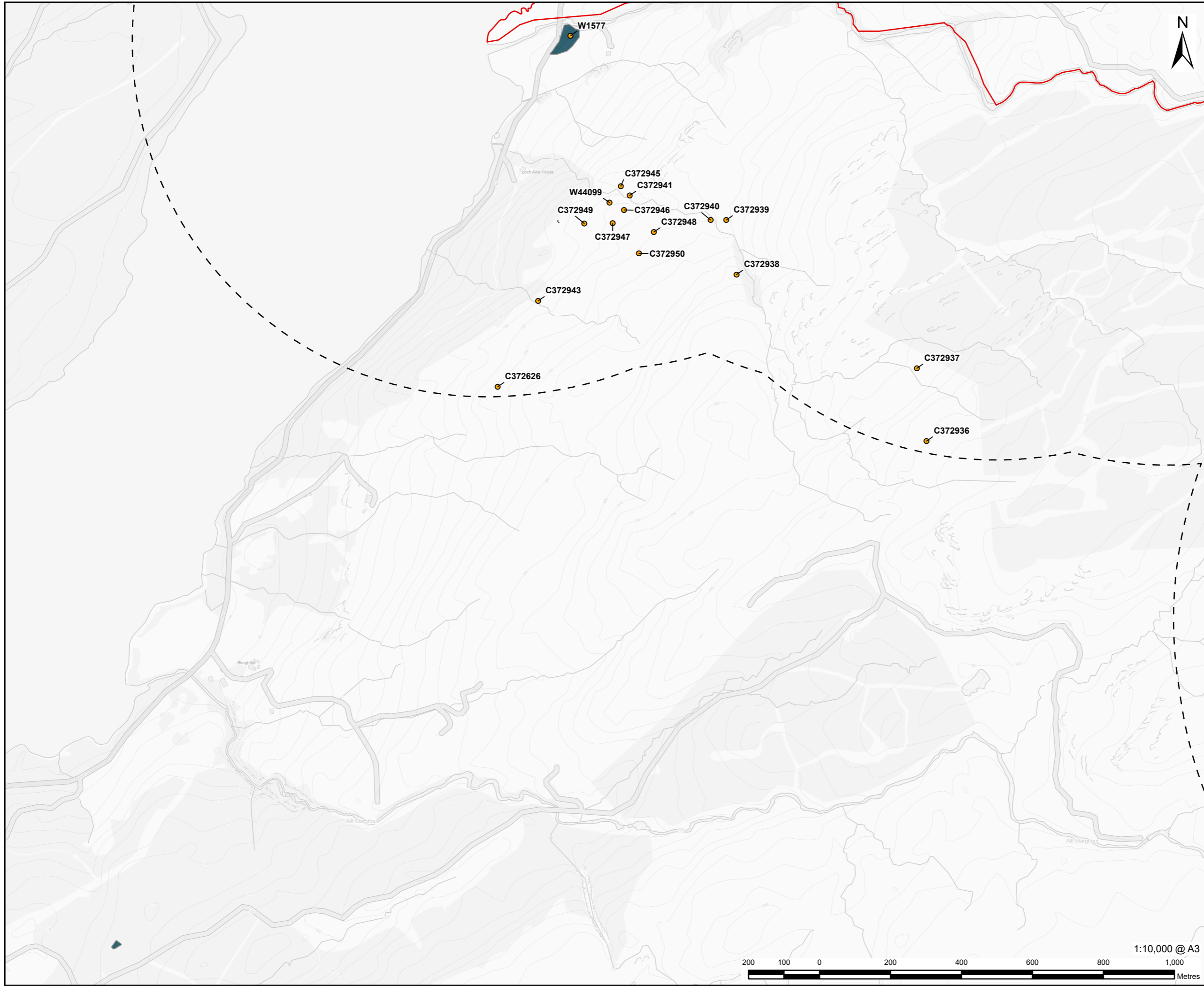
**PROJECT NUMBER**  
 60570241

**FIGURE TITLE**  
 Non-designated Heritage Assets within Study Area

**FIGURE NUMBER**  
 Figure 13.2 (Sheet 10 of 18)



This drawing has been prepared for the use of AECOM's client. It may not be used, modified, reproduced or relied upon by third parties, except as agreed by AECOM or as required by law. AECOM accepts no responsibility, and denies any liability whatsoever, to any party that uses or relies on this drawing without AECOM's express written consent. Do not scale this document. All measurements must be obtained from the stated dimensions.

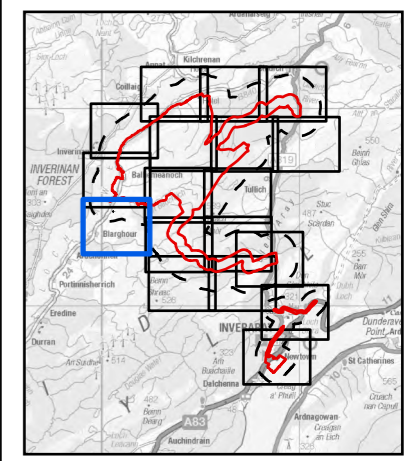


**PROJECT**  
**BALLIEMEANOCH**  
**PUMPED STORAGE**  
**HYDRO**

**CLIENT**  
 ILI (Borders PSH) Ltd.

**CONSULTANT**  
 AECOM Limited  
 177 Bothwell Street  
 Glasgow G2 7ER  
 www.aecom.com

- LEGEND**
- Development Boundary
  - Study Area
  - Non-designated Assets
  - Canmore - Area
  - WoSAS - Linears



**NOTES**

Reproduced from Ordnance Survey digital map data © Crown copyright 2024. All rights reserved. Licence number 0100031673. Contains public sector information licensed under the Open Government Licence v3.0.

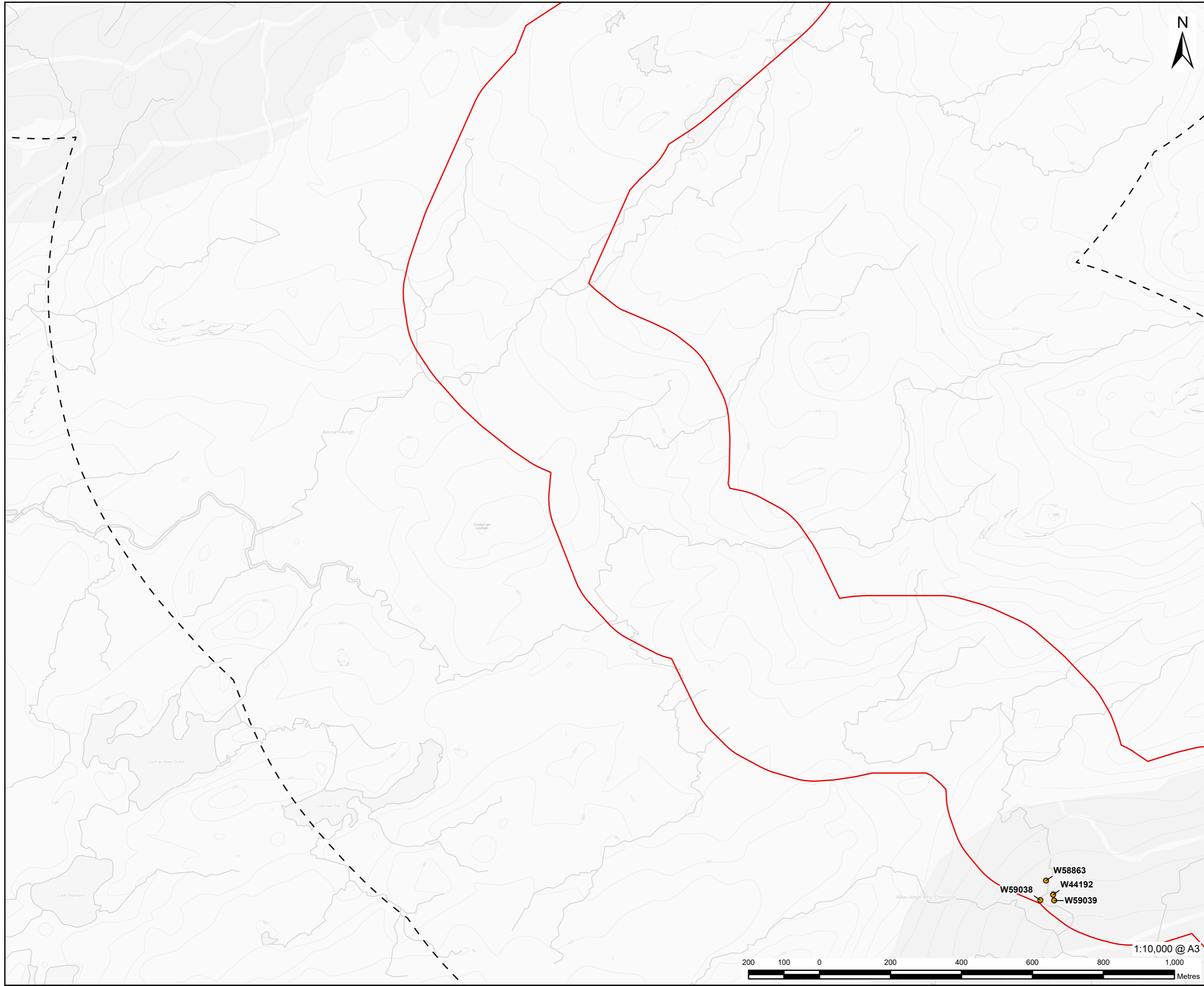
**ISSUE PURPOSE**  
 FINAL

**PROJECT NUMBER**  
 60570241

**FIGURE TITLE**  
 Non-designated Heritage Assets within Study Area

**FIGURE NUMBER**  
 Figure 13.2 (Sheet 11 of 18)

This drawing has been prepared for the use of AECOM's client. It may not be used, modified, reproduced or relied upon by third parties, except as agreed by AECOM or as required by law. AECOM accepts no responsibility, and denies any liability whatsoever, to any party that uses or relies on this drawing without AECOM's express written consent. Do not scale this document. All measurements must be obtained from the stated dimensions.



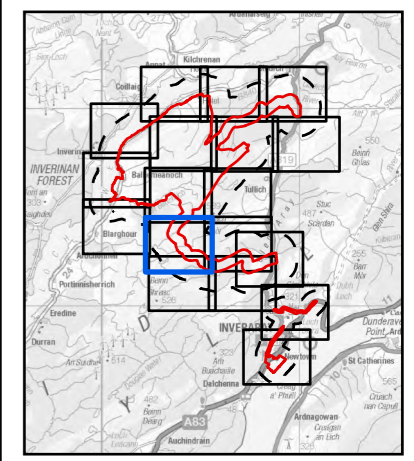
# AECOM

**PROJECT**  
**BALLIEMEANOCH**  
**PUMPED STORAGE**  
**HYDRO**

**CLIENT**  
 ILI (Borders PSH) Ltd.

**CONSULTANT**  
 AECOM Limited  
 177 Bothwell Street  
 Glasgow G2 7ER  
 www.aecom.com

- LEGEND**
- Development Boundary
  - Study Area
  - Non-designated Assets
  - Canmore - Area
  - WoSAS - Linears



**NOTES**  
 Reproduced from Ordnance Survey digital map data © Crown copyright 2024. All rights reserved. Licence number 0100031673. Contains public sector information licensed under the Open Government Licence v3.0.

**ISSUE PURPOSE**  
 FINAL

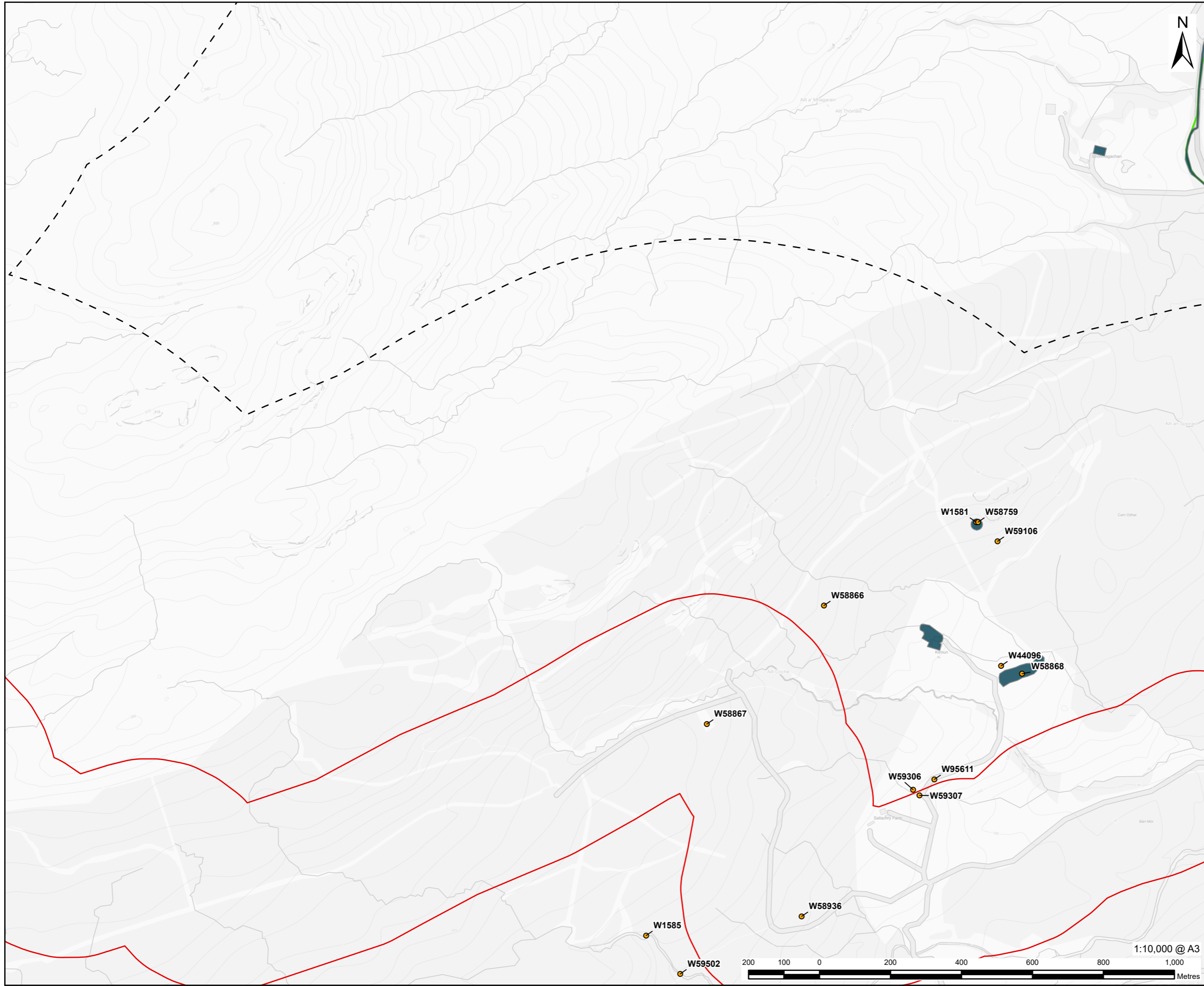
**PROJECT NUMBER**  
 60570241

**FIGURE TITLE**  
 Non-designated Heritage Assets within Study Area

**FIGURE NUMBER**  
 Figure 13.2 (Sheet 12 of 18)



This drawing has been prepared for the use of AECOM's client. It may not be used, modified, reproduced or relied upon by third parties, except as agreed by AECOM or as required by law. AECOM accepts no responsibility, and denies any liability whatsoever, to any party that uses or relies on this drawing without AECOM's express written consent. Do not scale this document. All measurements must be obtained from the stated dimensions.



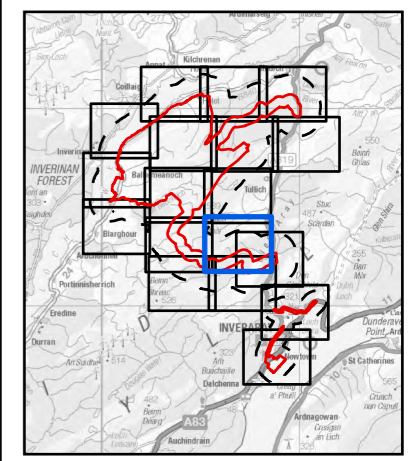
# AECOM

**PROJECT**  
**BALLIEMEANOCH**  
**PUMPED STORAGE**  
**HYDRO**

**CLIENT**  
 ILI (Borders PSH) Ltd.

**CONSULTANT**  
 AECOM Limited  
 177 Bothwell Street  
 Glasgow G2 7ER  
 www.aecom.com

- LEGEND**
- Development Boundary
  - Study Area
  - Non-designated Assets
  - Canmore - Area
  - WoSAS - Linears



**NOTES**

Reproduced from Ordnance Survey digital map data © Crown copyright 2024. All rights reserved. Licence number 0100031673. Contains public sector information licensed under the Open Government Licence v3.0.

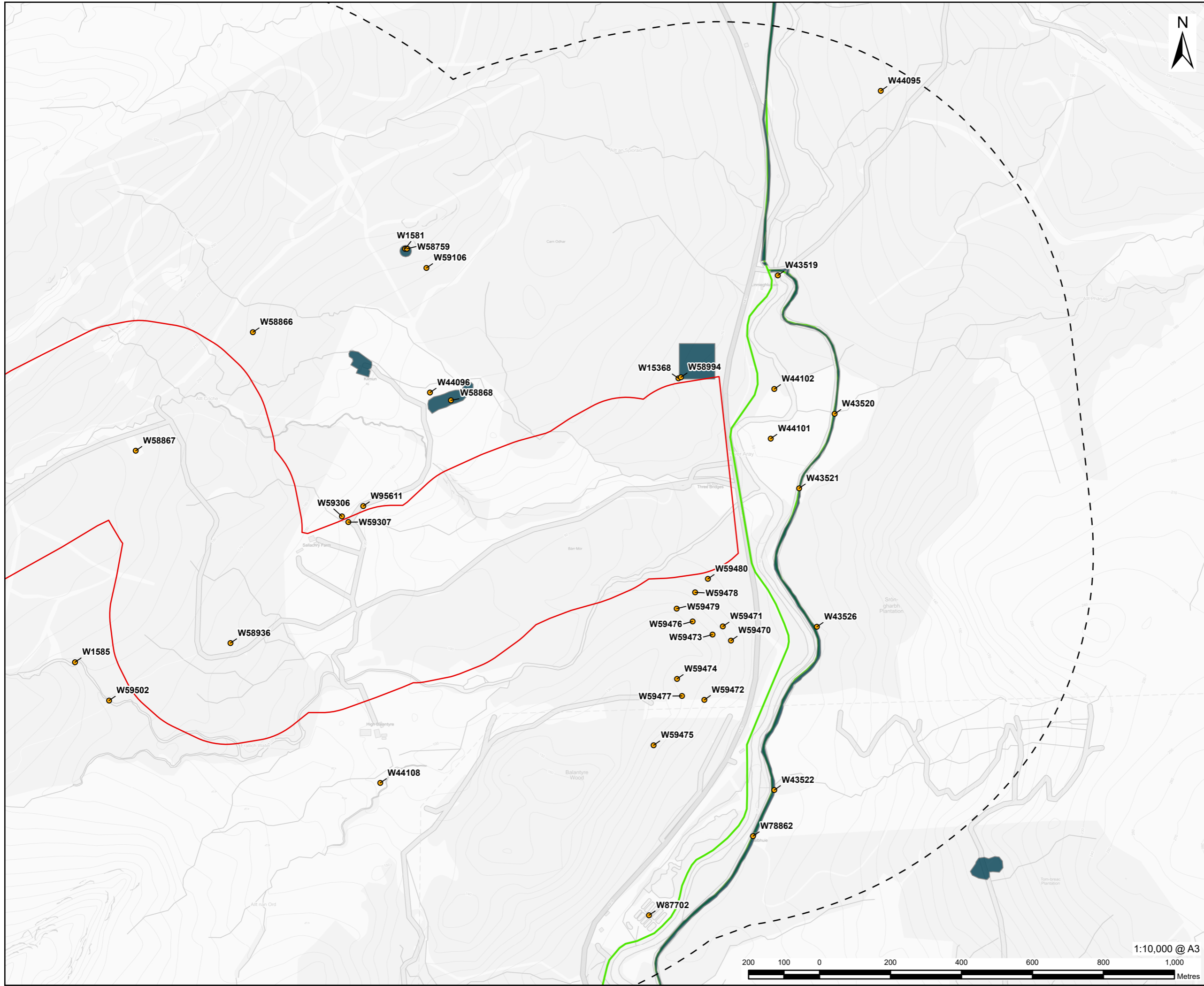
**ISSUE PURPOSE**  
 FINAL

**PROJECT NUMBER**  
 60570241

**FIGURE TITLE**  
 Non-designated Heritage Assets within Study Area

**FIGURE NUMBER**  
 Figure 13.2 (Sheet 13 of 18)

This drawing has been prepared for the use of AECOM's client. It may not be used, modified, reproduced or relied upon by third parties, except as agreed by AECOM or as required by law. AECOM accepts no responsibility, and denies any liability whatsoever, to any party that uses or relies on this drawing without AECOM's express written consent. Do not scale this document. All measurements must be obtained from the stated dimensions.



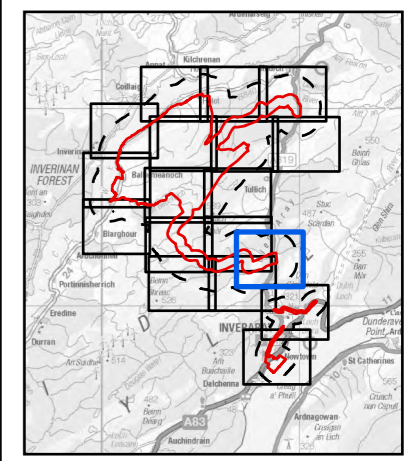
# AECOM

**PROJECT**  
**BALLIEMEANOCH**  
**PUMPED STORAGE**  
**HYDRO**

**CLIENT**  
 ILI (Borders PSH) Ltd.

**CONSULTANT**  
 AECOM Limited  
 177 Bothwell Street  
 Glasgow G2 7ER  
 www.aecom.com

- LEGEND**
- Development Boundary
  - Study Area
  - Non-designated Assets
  - Canmore - Area
  - WoSAS - Linears



**NOTES**

Reproduced from Ordnance Survey digital map data © Crown copyright 2024. All rights reserved. Licence number 0100031673. Contains public sector information licensed under the Open Government Licence v3.0.

**ISSUE PURPOSE**  
 FINAL

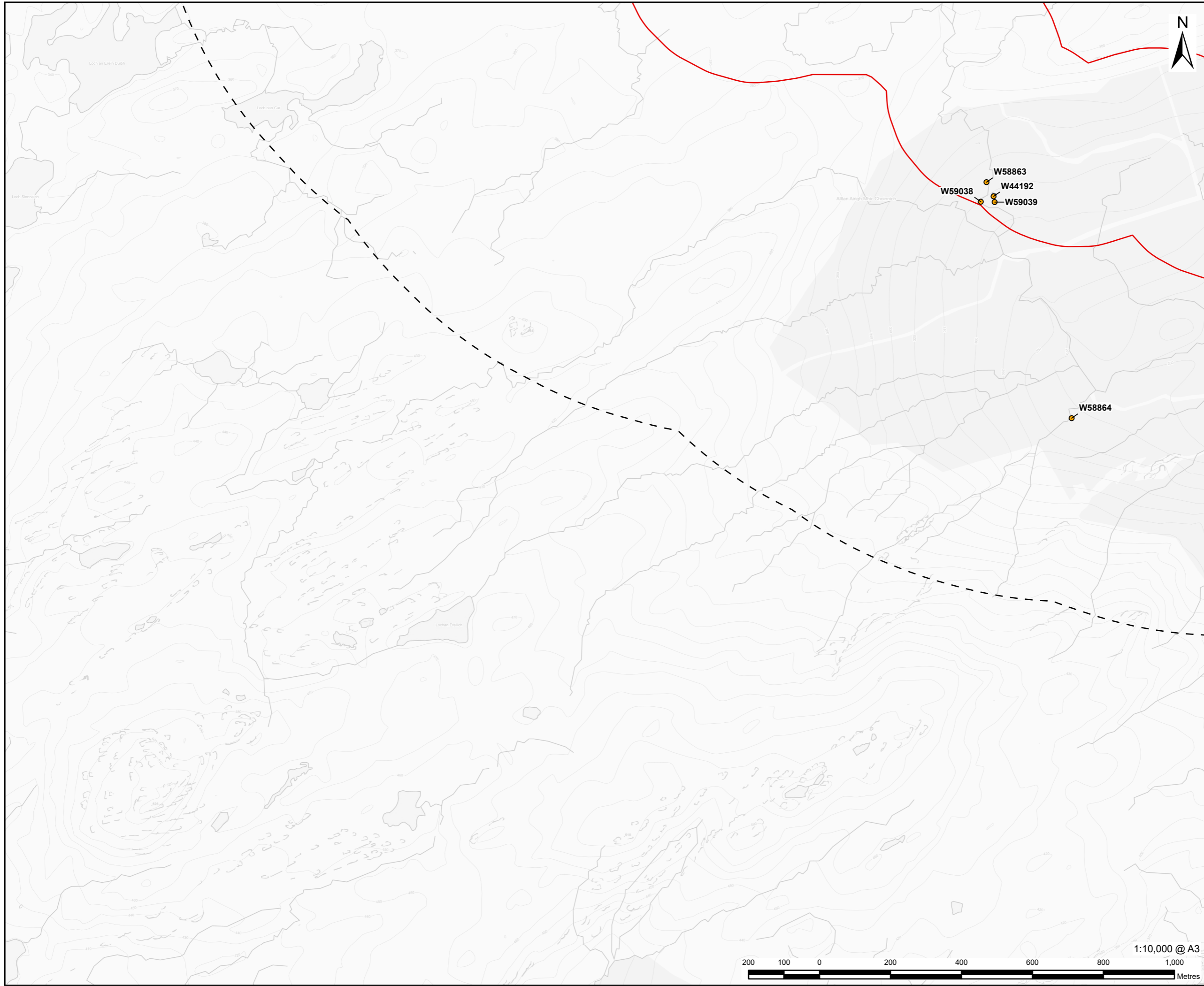
**PROJECT NUMBER**  
 60570241

**FIGURE TITLE**  
 Non-designated Heritage Assets within Study Area

**FIGURE NUMBER**  
 Figure 13.2 (Sheet 14 of 18)



This drawing has been prepared for the use of AECOM's client. It may not be used, modified, reproduced or relied upon by third parties, except as agreed by AECOM or as required by law. AECOM accepts no responsibility, and denies any liability whatsoever, to any party that uses or relies on this drawing without AECOM's express written consent. Do not scale this document. All measurements must be obtained from the stated dimensions.

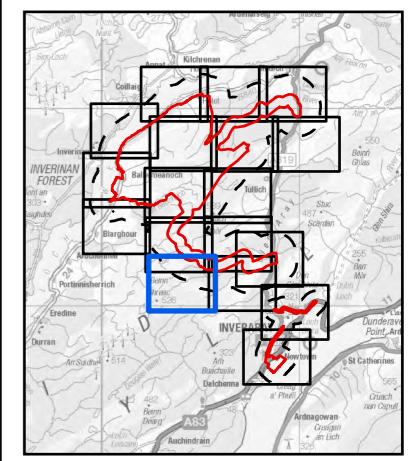


**PROJECT**  
**BALLIEMEANOCH**  
**PUMPED STORAGE**  
**HYDRO**

**CLIENT**  
 ILI (Borders PSH) Ltd.

**CONSULTANT**  
 AECOM Limited  
 177 Bothwell Street  
 Glasgow G2 7ER  
 www.aecom.com

- LEGEND**
- Development Boundary
  - Study Area
  - Non-designated Assets
  - Canmore - Area
  - WoSAS - Linears



**NOTES**

Reproduced from Ordnance Survey digital map data © Crown copyright 2024. All rights reserved. Licence number 0100031673. Contains public sector information licensed under the Open Government Licence v3.0.

**ISSUE PURPOSE**  
 FINAL

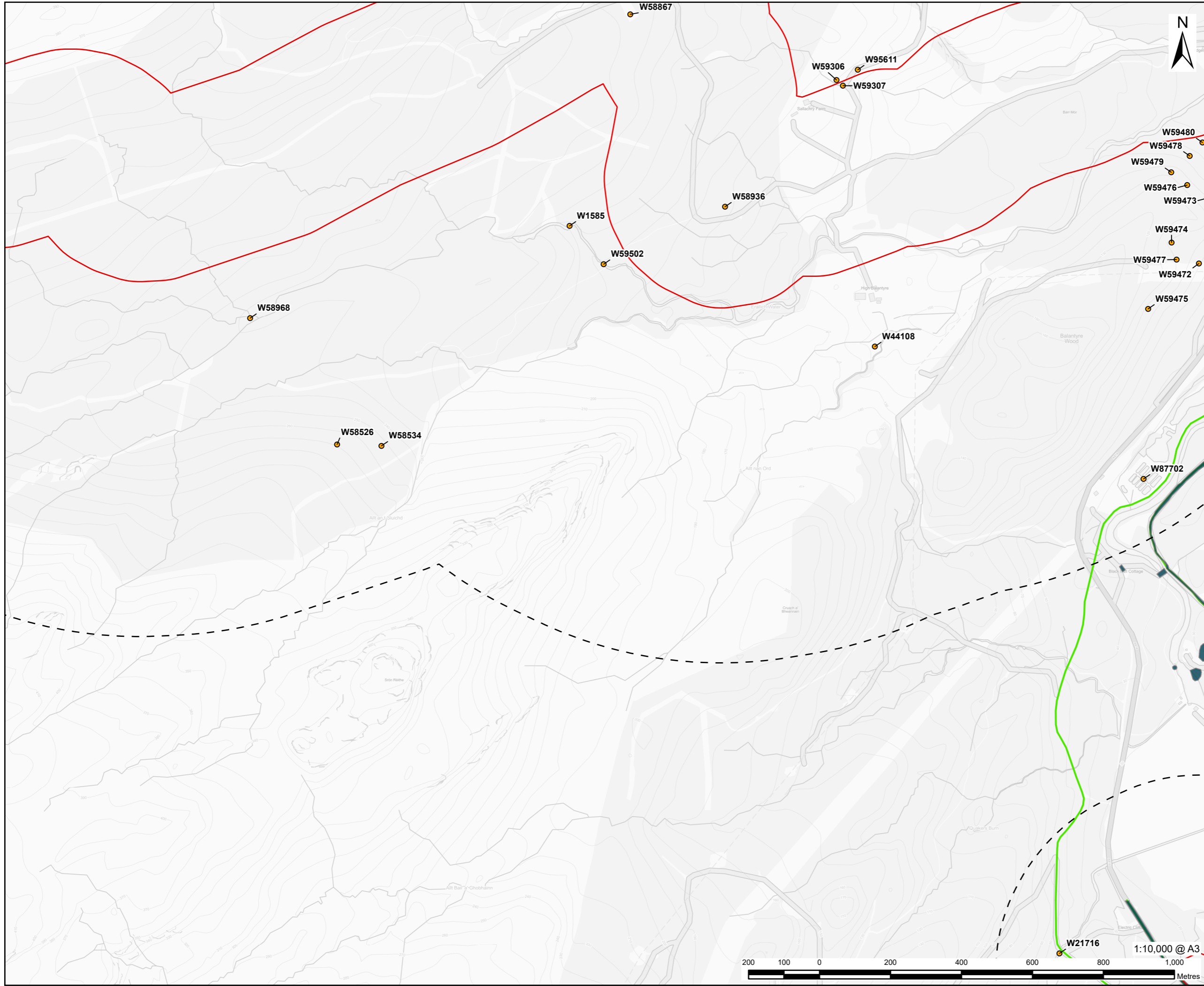
**PROJECT NUMBER**  
 60570241

**FIGURE TITLE**  
 Non-designated Heritage Assets within Study Area

**FIGURE NUMBER**  
 Figure 13.2 (Sheet 15 of 18)



This drawing has been prepared for the use of AECOM's client. It may not be used, modified, reproduced or relied upon by third parties, except as agreed by AECOM or as required by law. AECOM accepts no responsibility, and denies any liability whatsoever, to any party that uses or relies on this drawing without AECOM's express written consent. Do not scale this document. All measurements must be obtained from the stated dimensions.

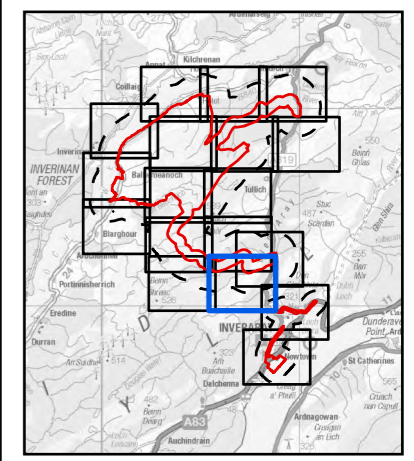


**PROJECT**  
**BALLIEMEANOCH  
 PUMPED STORAGE  
 HYDRO**

**CLIENT**  
 ILI (Borders PSH) Ltd.

**CONSULTANT**  
 AECOM Limited  
 177 Bothwell Street  
 Glasgow G2 7ER  
 www.aecom.com

- LEGEND**
- Development Boundary
  - Study Area
  - Non-designated Assets
  - Canmore - Area
  - WoSAS - Linears



**NOTES**

Reproduced from Ordnance Survey digital map data © Crown copyright 2024. All rights reserved. Licence number 0100031673. Contains public sector information licensed under the Open Government Licence v3.0.

**ISSUE PURPOSE**  
 FINAL

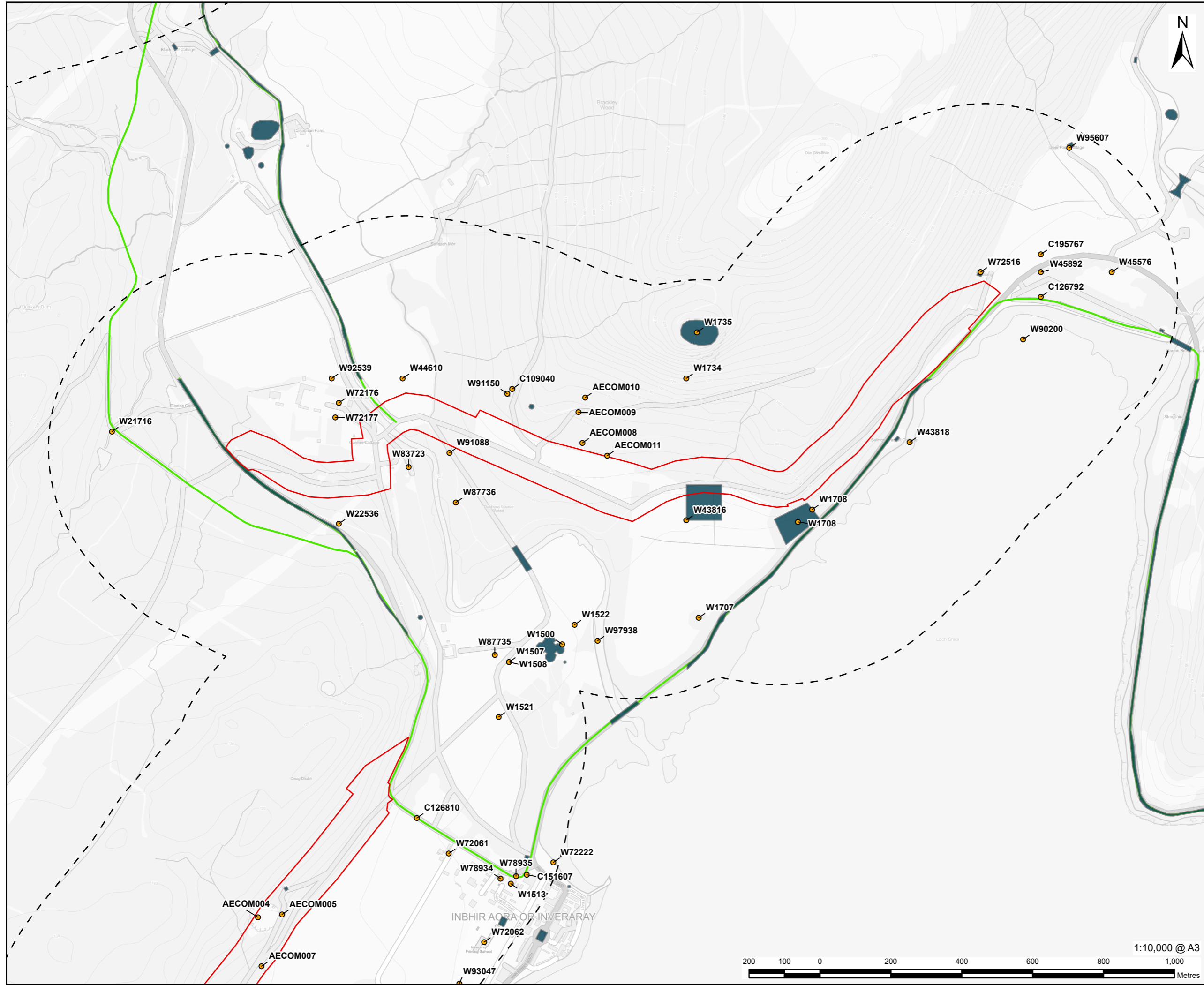
**PROJECT NUMBER**  
 60570241

**FIGURE TITLE**  
 Non-designated Heritage Assets within Study Area

**FIGURE NUMBER**  
 Figure 13.2 (Sheet 16 of 18)

This drawing has been prepared for the use of AECOM's client. It may not be used, modified, reproduced or relied upon by third parties, except as agreed by AECOM or as required by law. AECOM accepts no responsibility, and denies any liability whatsoever, to any party that uses or relies on this drawing without AECOM's express written consent. Do not scale this document. All measurements must be obtained from the stated dimensions.





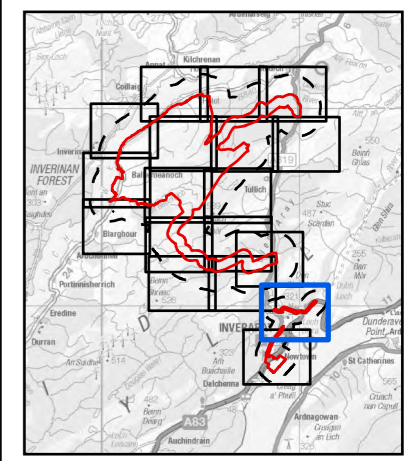
# AECOM

**PROJECT**  
**BALLIEMEANOCH**  
**PUMPED STORAGE**  
**HYDRO**

**CLIENT**  
 ILI (Borders PSH) Ltd.

**CONSULTANT**  
 AECOM Limited  
 177 Bothwell Street  
 Glasgow G2 7ER  
 www.aecom.com

- LEGEND**
- Development Boundary
  - Study Area
  - Non-designated Assets
  - Canmore - Area
  - WoSAS - Linears



**NOTES**

Reproduced from Ordnance Survey digital map data © Crown copyright 2024. All rights reserved. Licence number 0100031673. Contains public sector information licensed under the Open Government Licence v3.0.

**ISSUE PURPOSE**  
 FINAL

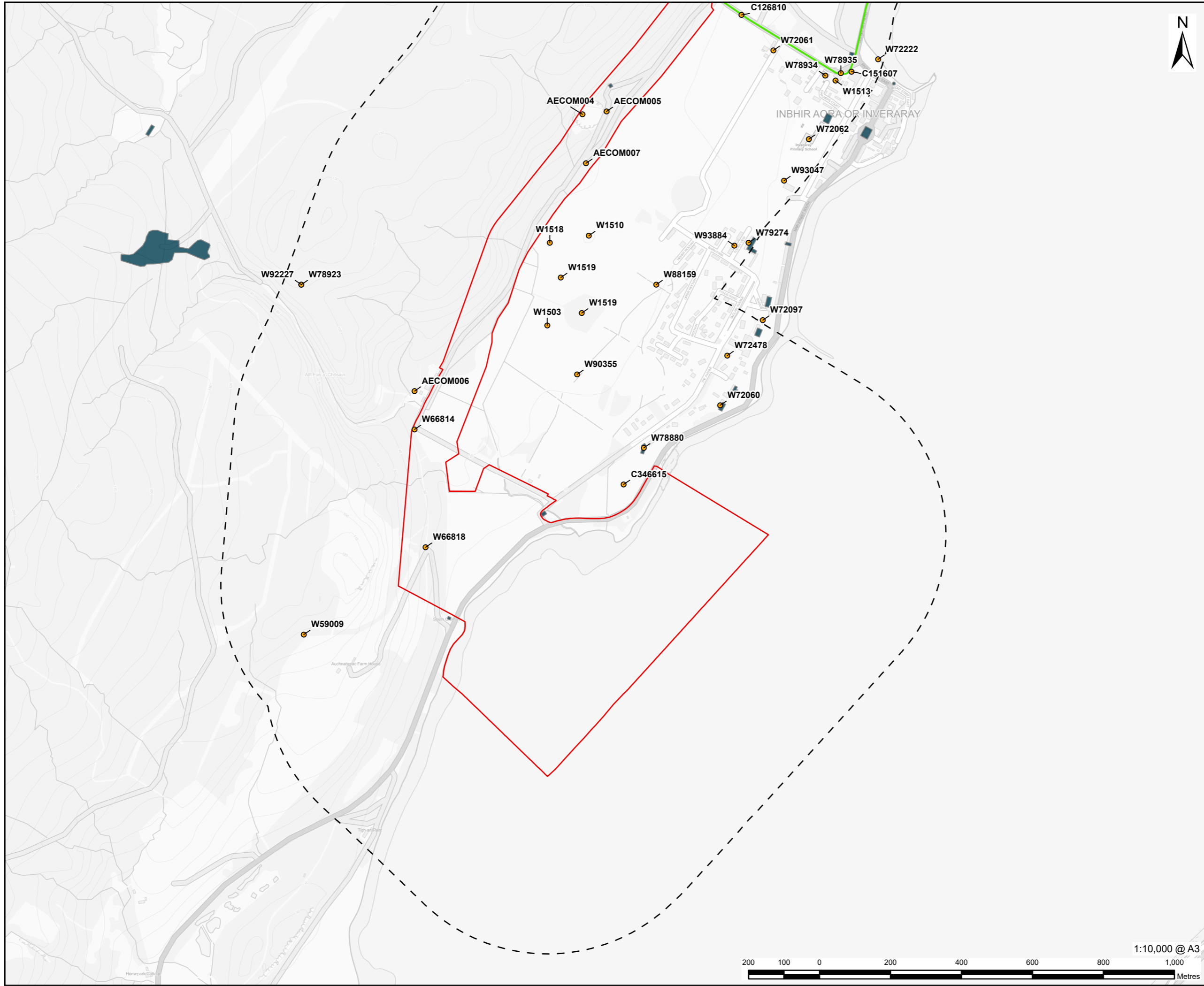
**PROJECT NUMBER**  
 60570241

**FIGURE TITLE**  
 Non-designated Heritage Assets within Study Area

**FIGURE NUMBER**  
 Figure 13.2 (Sheet 17 of 18)



This drawing has been prepared for the use of AECOM's client. It may not be used, modified, reproduced or relied upon by third parties, except as agreed by AECOM or as required by law. AECOM accepts no responsibility, and denies any liability whatsoever, to any party that uses or relies on this drawing without AECOM's express written consent. Do not scale this document. All measurements must be obtained from the stated dimensions.

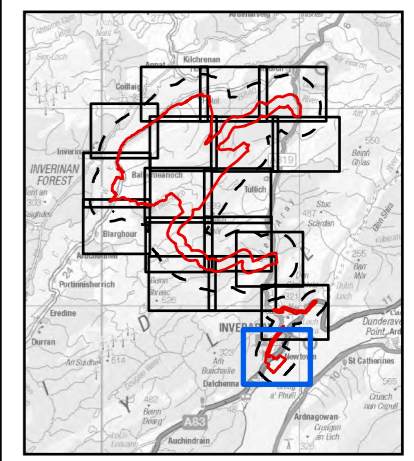


**PROJECT**  
**BALLIEMEANOCH  
 PUMPED STORAGE  
 HYDRO**

**CLIENT**  
 ILI (Borders PSH) Ltd.

**CONSULTANT**  
 AECOM Limited  
 177 Bothwell Street  
 Glasgow G2 7ER  
 www.aecom.com

- LEGEND**
- Development Boundary
  - Study Area
  - Non-designated Assets
  - CANMORE Canmore - Area
  - WoSAS - Linears



**NOTES**

Reproduced from Ordnance Survey digital map data © Crown copyright 2024. All rights reserved. Licence number 0100031673. Contains public sector information licensed under the Open Government Licence v3.0.

**ISSUE PURPOSE**  
 FINAL

**PROJECT NUMBER**  
 60570241

**FIGURE TITLE**  
 Non-designated Heritage Assets within Study Area

**FIGURE NUMBER**  
 Figure 13.2 (Sheet 18 of 18)



This drawing has been prepared for the use of AECOM's client. It may not be used, modified, reproduced or relied upon by third parties, except as agreed by AECOM or as required by law. AECOM accepts no responsibility, and denies any liability whatsoever, to any party that uses or relies on this drawing without AECOM's express written consent. Do not scale this document. All measurements must be obtained from the stated dimensions.